

ASSEMBLY INSTRUCTIONS FOR EARTHING WIRES



For the avoidance of ignition hazards as a result of electrostatic charges, we recommend our products with earthing bolts in conjunction with earthing wires. It is possible to use earthing wires with clamping ring and flange connections.

This version meets all potential equalisation requirements and offers the highest safety.

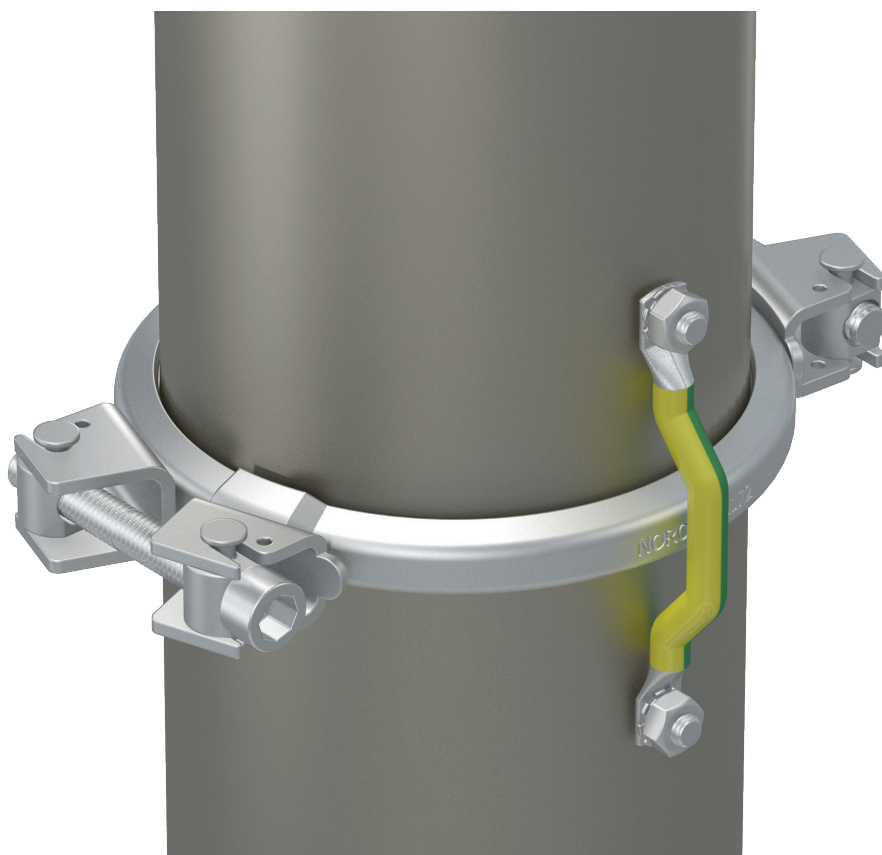
STEP 1

The components should be connected together in such a way that the earthing bolts line up with one another.

STEP 2

First, the earthing wire is pushed onto the bolt. Then the lock washer and the nut are mounted on the bolt.

In order to make it easier to fasten the earthing wire, it is recommended to mount one end first and then the second.



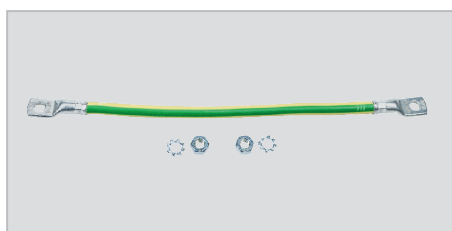
Information



incl. lock washers and nuts M6

protection-wire: copper, 16 mm²
10 pieces in PE bag

Abbildung | Illustration



	Art.-Nr.	€
L = 120 mm	66001200	
L = 230 mm	66002300	
L = 330 mm	66003300	
L = 430 mm	66004300	